



What we create today, others may create tomorrow. -- www.setool.net -- © SEtool 2005.

Contents

Getting started ___3

Install SEtool
Register @ Support Zone
General info

Getting to know Setool software ___6

Program overview

Basic operations ___9

Unlock SEMC phones
Debrand or change language
Firmware upgrade
Remove camera sound

Advanced operations ___10

Read GDFS
Write GDFS
Change CDA number and revision
Change CID
Read and write files
Recovery with CID36 EROM's
Add languages to phone
Fill empty board

Troubleshooting _16

Appendix A

SEtool and LG phones
Coming soon...

Appendix B

SEtool and Sharp phones
Coming soon...

Appendix C

Decimal to Hex to ASCII Conversion Table _17

SEtool manual – R1A

Getting started

Install SEtool, register @ Support Zone, general info.

More information and downloads area available at www.SETool.net.

Install Setool

Before you can use SEtool you need to:

- Insert SEtool dongle into free USB port in the computer.
- Download latest version of SEtool software from <http://www.setool.net/downloads.htm>.
- Install SEtool dongle drivers that can be found in SEtool/egate_driver directory.

Register @ Support Zone

To be able to receive the best support and download latest flash files, GDFS, etc from Support Zone you need to register your SEtool dongle.

Goto www.SETool.net/support and follow carefully registration steps. Please double check all the info you entered is correct or you can have problems with registration. After 3 hours, kindly use CHECK LOGIN form to check your activation status.

After successful registration and activation you may proceed to Support Zone where you will always find latest flash files, etc. that will allow you best possible SEtool experience.

If you have any problems please contact your reseller. By submitting the form, you agree, that this login/password will never be shared.

Multiple IP (sharing of logins) is not allowed; therefore we will block your account without any warnings to user or reseller.

All files are only for your personal use and in no event we will be liable for any damages what's over arising out of this.

Do not download all existing files from support area, download ONLY files which you are in need of. If this condition will be violated, your account will be blocked and therefore limited.

SEtool manual – R1A

General info

SEtool software is always under development and new features and bug fixes are added almost daily. Be sure to always download latest version of SEtool software from www.SETool.net/downloads.htm. This is also a condition to get a support. Official communication with SEtool support is via *SEtool support forum* that can be found on www.mobile-files.com. There you can always get support from SEtool Team, but also from growing number of members that might already experienced similar issues.

Please do not use email and PM communication for getting official support, unless told so by SEtool Team.

SEtool dongle and software is tested on Windows XP 32bit. Although it might work with other operating systems there is no official support for any issues you might experience.

SEtool software uses protection that some antivirus/spyware companies identify as a virus. We can only assure you that SEtool software is not and will never be infected by virus or will ever collect any privacy information from your computer.

We can not be responsible if you get SEtool software or flash files from any other source other then official SEtool ways of distributing it.

SEtool Team will never send you any software or files through email or ask you for any personal information on public forums. So never give out your username/password or SEtool dongle number on support forums.

SEtool supports latest SEMC phones that are CID16, CID29 or CID 36. If phone is not listed in SEtool software, please do not try to use SEtool with it. It may lead to damage of the phone.

SEtool also supports some LG and Sharp phones that are based on SEMC platform. For more info please visit www.setool.net or look at the end of this manual.

Please note that LG and Sharp support is bonus to all SEtool customers and should be treated as so. SEtool is primary SEMC tool and SEMC issues will get priority support.

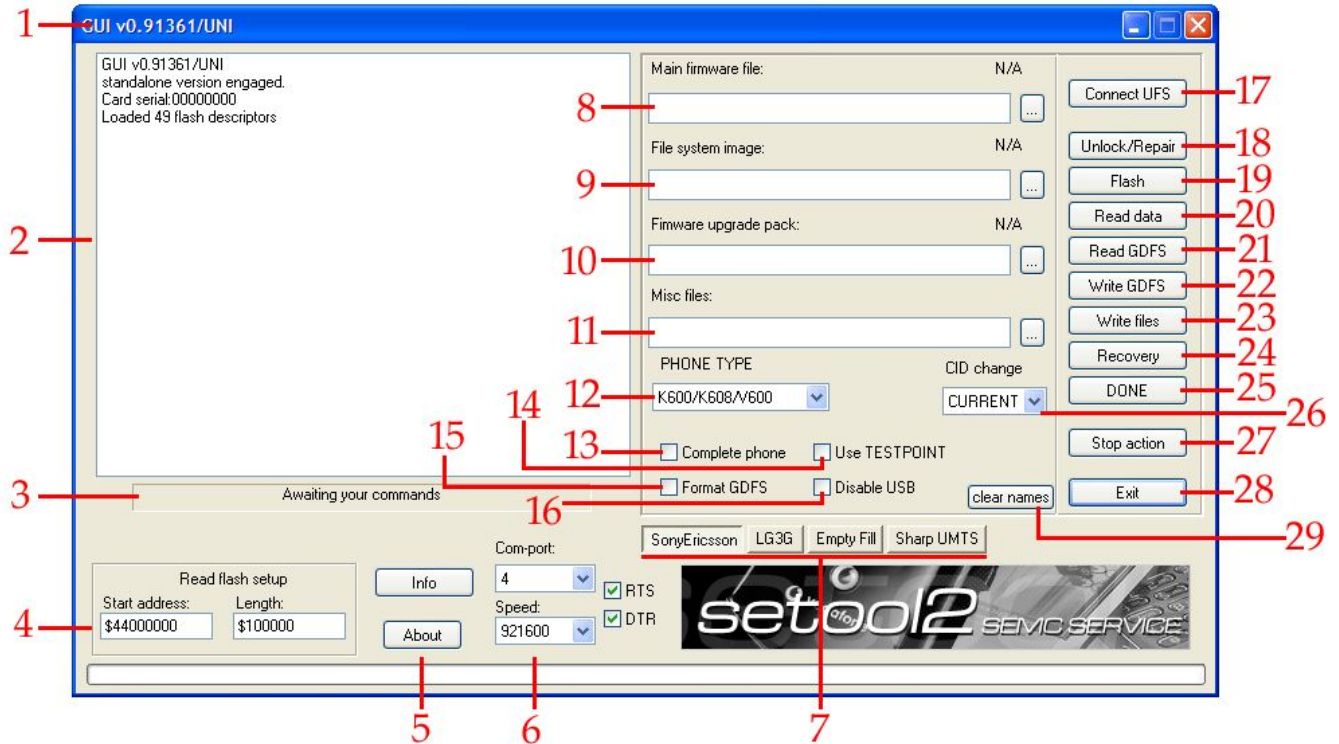
SEtool manual – R1A

SEtool is compatible with following cables:

USB Cable, SyncStation DSS20/25, T28 Service Cable, Sarasboxes and different converters and China cables. Please check

www.setool.net and *SEtool support forum* for latest info on available cables.

Getting to know SEtool software



SEtool manual – R1A

1. *SEtool software version* – compare always this version with latest from www.setool.net to confirm you are using latest version
2. *Information area* – the main window with all information about processes happening
3. *Interaction area* – this window informs on an user action SEtool software is expecting
4. *Read flash setup* – used when you want to read firmware from the phone
5. *Info/about buttons* – takes you to www.setool.net for latest info
6. *Com-port/Speed* – here you select what type of cable and speed you are using
7. *Phone brand* – select phone manufacturer
8. *Main firmware file* – choose here Main firmware file that you downloaded from *Support Zone* – usually *.bin or *.cry
9. *File system image* – choose here FS file with needed language that you downloaded from *Support Zone* – usually *.eu1 (depending on language pack you are downloading – emea1, america1...) or *.cry. This file is used when debranding or changing language of your phone!
10. *Firmware upgrade pack* - - choose here SFA file that is the same as language pack already in your phone and that you downloaded from *Support Zone* – usually *.eu1 (depending on language pack you are downloading – emea1, america1...) or *.cry. This file is used only when doing firmware upgrade without need to debrand or change language!
11. *Misc files* - choose here GDFS file you have downloaded from *support zone* or use together with *Write files*
12. *Phone type* – select here the phone you want to flash
13. *Complete phone* – when debranding or changing language of the phone you need to complete it by selecting this box
14. *Use TESTPOINT* – needed to unlock some phones (maybe in future)
15. *Format GDFS* – when you have totally dead phone this is your last chance to save it. Select “good” GDFS in *Misc files*, select this box and press Unlock/Repair
16. *Disable USB* - disable using of EPI interface at all. Some phones think that USB is present, while it is not.
17. *Connect UFS* – if using any Saras box as flashing/unlock interface rather than USB or COM cable, press this to connect the box... you will need activation string to be able to use it!
18. *Unlock/Repair* – used to unlock, read codes or repair the phone

SEtool manual – R1A

19. *Flash* – press this button to do firmware upgrade, debrand or change language in the phone
20. *Read Data* – to be used together with *Read flash setup (4)* to read firmware from your phone
21. *Read GDFS* – you can read GDFS from a “good” phone and save it for later repairs, the file is saved in Setool directory as GDFS.bin
22. *WriteGDFS* – used when you want to write back some “good” GDFS to your phone. An unlock procedure might be needed afterwards.
23. *Write files* – you can write some files by creating script that will be executed. Script need to be put in *Misc files*.
24. *Recovery* – will try to load recovery loaders to the phone.
25. *DONE - J*
26. *CID change* – “to virtually change CID of phone, thus allowing, for example, flashing cid16 flash into cid29 phone and so on. Or simple change CID. Just for fun.” J
27. *Stop action* – stops current action
28. *Exit* – exits Setool
29. *Clear names* – clears all fields

Now that you are familiar with Setool software it is time for some real action.

Enjoy SEtooling™!

Basic operations

This part of the manual will get you going with basic functions of Setool software like: unlock, reset codes, firmware upgrade, debrand and change language in the phone.

Please note that depending of the cable you use you will have to select port in SEtool (if using USB cable you'll need to select USB in COM port, if you are using UFS press Connect UFS, etc...)

Unlock SEMC phones

One of the simplest and fastest operations with SEtool is to unlock the phone. Just connect cable to fully charged, turned off phone, choose Phone Type (12) and press Unlock/Repair (18). Follow any instructions on screen!

In some cases (maybe future phones J)you will need to use TESTPOINT to unlock the phone. For more info please visit www.SETool.net and Setool support forum.

This way you will also read/reset any user codes that might be in the phone!

Debrand or change language

When you need to debrand the phone from some operator branding or simply change language in the phone you will need to flash your phone with Main and FS files from *Support Zone*.

By choosing Main (8) and FS (9) files, , choosing Phone Type (12) and pressing FLASH (19) button, you will perform a *Full Flash*. That means: **all user data in the phone will be lost!** To save user data you need to backup prior to *Full Flash* with 3rd party software!

For complete list of available languages login to *Support Zone* on www.SETool.net/support.

Be sure to select Complete phone (13) or you will end with configuration error. To solve this error you not need to *Full Flash* again. Simply press Clear names (29), choose Phone Type (12), select Complete phone (13) and press FLASH (19) button.

SEtool manual – R1A

Firmware upgrade

To upgrade firmware of your phone to the latest one, without need to debrand it or change language, simply choose Main (8) and SFA (10) files, choose Phone Type (12) and press FLASH (19) button. You will not loose any user data in the phone! For complete list of available SFA files login to *Support Zone* on www.SETool.net/support.

There is no need to select Complete Phone when doing firmware upgrade.

Remove Camera Sound

Camera shutter sound – in silent mode - is one of the most annoying features in SEMC phones. With SEtool you can easily get rid of it.

Press Clear Names (29), choose Phone Type (12), select Complete Phone (13) and press FLASH (19) button.

Camera shutter sound is now gone in Silent mode.

Reset Total Call Timer

To reset Total Call Timer in Service menu just Press Clear Names (29), choose Phone Type (12), select Complete Phone (13) and press UNLOCK/REPAIR (18) button.

Advanced operations

In this part of manual you will get going with more advanced operations. Be sure you know what you are doing as some of this actions may lead you to some serious problems. Of course all problems can be solved by SEtool except for hardware failure ones J .

Read GDFS

You can read GDFS from your phone when you want to back it up or use it for some damaged phone. You just need to, choose Phone Type (12) and press Read GDFS (21) button and it will be saved in your SEtool directory as GDFS.bin. Simple, yet very useful for resolving issues.

You can always download “good” GDFS from *Support Zone* on www.SETool.net/support.

Write GDFS

If you have COMPLETELY damaged GDFS, select Format GDFS (15), in Misc Files (11) choose “good” GDFS, choose Phone Type (12) and press Write GDFS (22).

Change CDA number and revision

SEtool uses standard CDA number and also revision for all phone model and languages. The objective of changing CDA number and Revision is to customize the phone to your local setting.

There are two ways of changing it. First way is to find customize.xml file in SEtool directory \tpa\preset\custom and edit those numbers in some text editor. Now just do *Full Flash* (MAIN, FS and Complete). For more info on different CDA numbers for different phones please goto *SEtool support forum* on www.mobile-files.com and search or ask for wanted info.

To change 1EOW or 2EOW just choose SFA (10) file and press FLASH (19).

Second way is to use script to change CDA number, but also some other things. Please check table on next page for more info:

SEtool manual – R1A

Function	Script Example
To enable Channel and Battery Info	gdfswrite:000208BBFFFFFFF01010101010101FFFFFFFFFFF01010101FFFFFFFFFFF
To change bandlock	gdfswrite:000000AA0AFFFFFFFFFFFFFFF FFF00 (OA = band value, please refer to How to change bandlock for full table)
To Change CDA	gdfswrite:00020CBC4344413130323238362F39 (in this example: CDA102286/9)
To Change Revision	gdfswrite:00020CBD523341 (In this example, Revision = R3A)
To change "1EOW"	gdfswrite:00020CBF31323334 (31323334 = 1234 = Revision in ASCII format)
To change Language pack info	gdfswrite:00020CBB454D45415F32 (In this example, Language pack info = EMEA_2)
To Fix Z1010 voice control Such as, unable to use my voice control functions.	gdfswrite:000000460F gdfswrite:000000470F

To execute script simply make new *.txt file with one of the Script examples, save it, choose the file in Misc Files (11) and press Write Files (23). For much more info on this, please open GDFS file that you read from

your phone in any HexEditor and search J. Or goto *SEtool support forum* for more info.

As most of this have no value in real life this manual will not go deeper into it. If you are still interested, your imagination, Google and HexEditor are your best friends J.

Decimal to Hex to ASCII Conversion Table can be found on last pages of this manual.

SEtool manual – R1A

Change CID

Another cool/fun feature of SEtool software is to change CID of the phone. Why?

To virtually change CID of phone, thus allowing, for example, flashing CID16 flash into CID29 phone and so on. Or simple change CID. Just for fun **J**.

Just select wanted color and CID (**26**), choose Phone Type (**12**) and press FLASH (**19**). Also, it will work during flashing process, so if flashing bulk of phones, simple select needed flash files (**8+9**), select needed CID (**26**) and press FLASH (**19**) - all will be done auto.

Read and write files

It is possible to read and write files and make some script commands for it. You need to create *.txt with script you need and the Read Data (**20**) or Write Files (**23**).

How?

```
-----  
readfile:/path/to/file/filename.ext
```

example:

```
readfile:/tpa/preset/custom/customize.xml
```

file are stored in "ph_out" directory in setool2

directory.

SEtool will NOT create it, so - create manually. (distribution archive contains that dir)

```
-----  
deletefile:/path/to/file/filename.ext
```

delete file.

example:

```
deletefile:/tpa/preset/custom/customize.xml  
-----
```

```
-----  
chdir:/directory
```

it changes current directory. needed for next commands.

example:

```
chdir:/tpa  
-----
```

```
-----  
listfiles:
```

SEtool manual – R1A

displays filename in CURRENT WORKING DIRECTORY

listdirs:

recursively list all files and directories starting from
CURRENT WORKING DIR.

now, script example

chdir:/
listdirs:
readfile:/tpa/preset/custom/customize.xml

Recovery with CID36 EROM's

Sometimes, you can kill CID 36 K750 or V/Z800 during flashing process. If it doesn't work after usual reflash, try the following:

1. Choose Phone Type (12) and press RECOVERY (24)
2. Choose EROM file from *Support Zone* in Main firmware file (8) and press FLASH (19)
3. Choose MAIN and FS (8+9), select Complete Phone (13) and press FLASH (19)

In VERY rare cases you can damage GDFS. In that case write (22) good GDFS file (11) (or look into \freq in SEtool folder) then UNLOCK (18) phone.

If still any error, please start from number 1 again J .

SEtool manual – R1A

Add languages to phone

SEtool can add as much language as possible to your phone. Check the download section of www.setool.net/support for available languages. All language files are named in SFA format. It is important that the language pack must be at the same version of the Main Firmware version.

Just choose SFA file in Firmware Upgrade Pack (10), choose Phone Type (12) and press FLASH (19).

Repeat for adding another language pack.

Fill empty board

Goto Empty Fill Tab (7).

First fill right imei, choose Phone Type (12), select CID (26) you need. select in EMPTY tab special flashes for empty (MAIN (8)and FS (9) – be sure that you are in Empty Fill (7))

Staying on EMPTY tab (7) press Recovery (24).
Certificate must be written successfully!

Now, double check IMEI. If all is 100% correct, check "WRITE OTP" checkbox and press FLASH (19) (be sure that you are in Empty Fill (7))
Phone will be flashed, GDFS will be filled and phone will be ready to use.

Troubleshooting

Error Message	What to do
csloader refused to start fs services, error is:0 failed, that is fatal	Reflash FS Image OR Main Image + FS Image. No "Complete Phone" is needed
llbug: no ACK ! (All llbug: no ACK error)	<ol style="list-style-type: none"> 1) Check or change cable 2) Change Operation System. Better use WinXP 3) Lower speed in Comport Setting
rsa prologue NAK RECOVERY MODE STARTED rsa request not accepted Open COM port OK Stop signal set. rsa request not accepted All possible recovery loaders fail. That phone not supported Phone can't boot,sorry.	<ol style="list-style-type: none"> 1) Check or Change cable. Make sure you are using T28 (flashing) cable or <i>modified</i> DCU-11 USB cable. Normal data cable and DCU-11 USB cable will not work with SETOOL2 2) Check your Comport setting. Make sure you are using the right Comport 3) Lower speed in Comport Setting
Flashing fs image:c:\setool\flash\k700_r2ae033\k700r2ae_fs.eme a1 CURRENT FLASH FILE CID:29 SSW uses dynamic hash, dynamic hash len is:101 Will flash 101 blocks...	<ol style="list-style-type: none"> 1) Flashing Main + FS image without "Complete Phone" 2) After flashing, turn phone on, then turn it off again 3) Than, press "Complete Phone" and

...superblock not accepted llbug: no ACK ! loader refused shutdown, that is minor error.	press "Flash"
csloader refused to start gdfs services, error is:29 failed, that is fatal	<ol style="list-style-type: none"> 1. read own gdfs then write it back and try again OR resurrect phone with gdfs from setool.net

Hex to ASCII Conversion Table

Hex	ASCII	Hex	ASCII	Hex	ASCII	Hex	ASCII
00	NUL	20	SP	40	@	60	'
01	SOH	21	!	41	A	61	a
02	STX	22	"	42	B	62	b
03	ETX	23	#	43	C	63	c
04	EOT	24	\$	44	D	64	d
05	ENQ	25	%	45	E	65	e
06	ACK	26	&	46	F	66	f
07	BEL	27	'	47	G	67	g
08	BS	28	(48	H	68	h
09	HT	29)	49	I	69	i
0A	LF	2A	*	4A	J	6A	j
0B	VT	2B	+	4B	K	6B	k
0C	FF	2C	,	4C	L	6C	l
0D	CR	2D	-	4D	M	6D	m
0E	SO	2E	.	4E	N	6E	n
0F	SI	2F	/	4F	O	6F	o
10	DLE	30	0	50	P	70	p
11	DC1	31	1	51	Q	71	q
12	DC2	32	2	52	R	72	r
13	DC3	33	3	53	S	73	s
14	DC4	34	4	54	T	74	t

15	NAK	35	5	55	U	75	u
16	SYN	36	6	56	V	76	v
17	ETB	37	7	57	W	77	w
18	CAN	38	8	58	X	78	x
19	EM	39	9	59	Y	79	y
1A	SUB	3A	:	5A	Z	7A	z
1B	ESC	3B	;	5B	[7B	{
1C	FS	3C	<	5C	\	7C	
1D	GS	3D	=	5D]	7D	}
1E	RS	3E	>	5E	^	7E	~
1F	US	3F	?	5F	_	7F	DEL